

SHILP®

📍 SHILP House
Beside Rajpath Club, Rajpath Rangoli Road
Bodakdev, Ahmedabad - 380054. Gujarat, India.

🌐 www.shilp.co.in

✉ sales@shilp.co.in

☎ +91 75748 44123
+91 75748 04123

www.gujrera.gujarat.gov.in

RERA Registration No.: PR/GJ/AHMEDABAD/AHMEDABAD CITY/AUDA/CAA07959/250121

DEVELOPERS NOTE

- Developers reserves the rights to make necessary changes in the above specifications without any prior notice and such changes would be binding to all members.
- Registration, AMC - GEB charges, GST, Govt. taxes & Maintenance charges will be borne by the members.
- The information contained in this brochure is subject to change as may be approved by the authorities and cannot form part of any offer or contract. All plans are subject to any amendments approved by the relevant authorities.
- Floor areas are approximate and subject to final survey illustrations in this brochure are artistic impressions and serve only to give an approximate idea of the project. While every reasonable care has been taken in providing this information, its owners cannot be held responsible for any inaccuracy
- Subject to Ahmedabad jurisdiction.

Structural Consultant :
MANTHAN STRUCTURES LLP

ultimate
exclusive
best
perfect
ideal
unsurpassed
paramount
unprecedented

ONES

there are many words that describe your workspace... we call it

SHILP[®]
ONE

THE EXCLUSIVE ARCHITECTURE

A workspace, this ideal is worthy of an exclusive architecture. We at Shilp create architecture that becomes a landmark in itself.

Because your workspace does not need an address but it will become the address.

SHILP ONE

SHILP ONE®



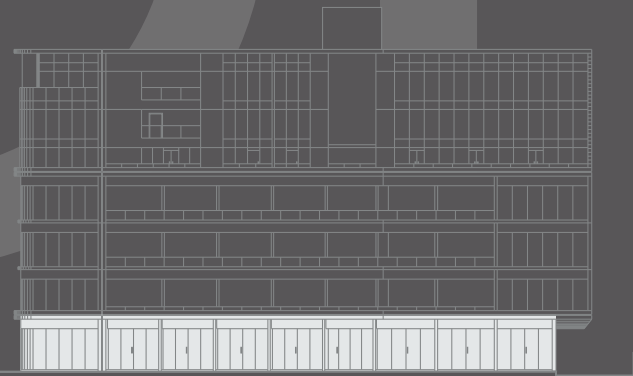
SHILP ONE

THE ULTIMATE FRONTAGE

A building that optimizes visibility. A complete glass facade to enhance not only your view but to give visibility to your business at the forefront of a corner location on large roads.

At Shilp One visibility is designed to be part of the space you choose.

SHILP ONE®



GROUND FLOOR PLAN

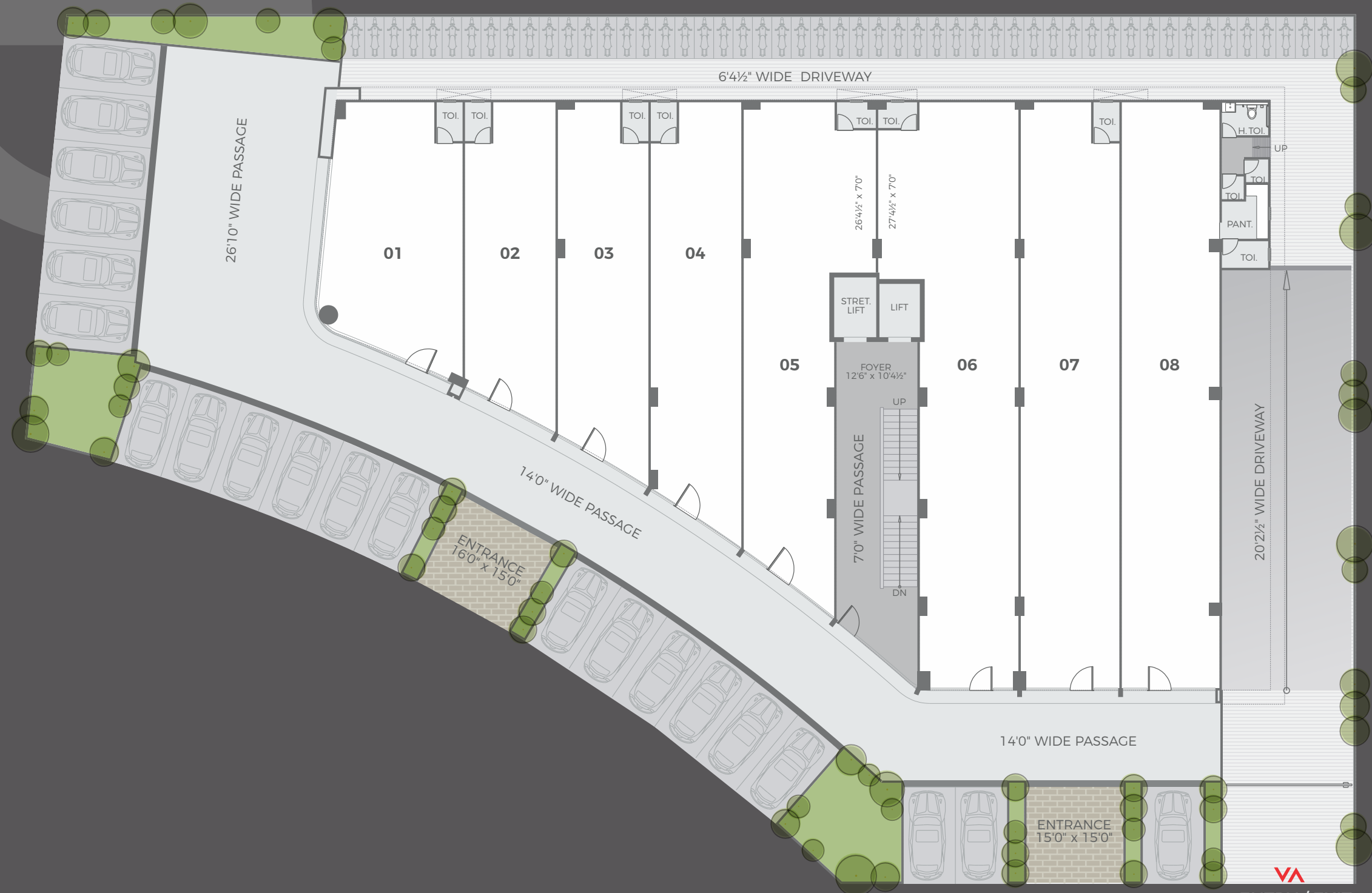
SHOPS NO.	SIZES
01	20'10½" x 39'10"
02	14'0" x 47'10"
03	14'0" x 55'8½"
04	14'0" x 64'7½"
05	14'0" x 73'6"
06	15'3" x 91'0"
07	15'3" x 91'0"
08	15'1¼" x 91'0"



← TOWARDS BOPAL

SHILAJ CIRCLE

40.00 MT. ROAD TOWARDS SHILAJ

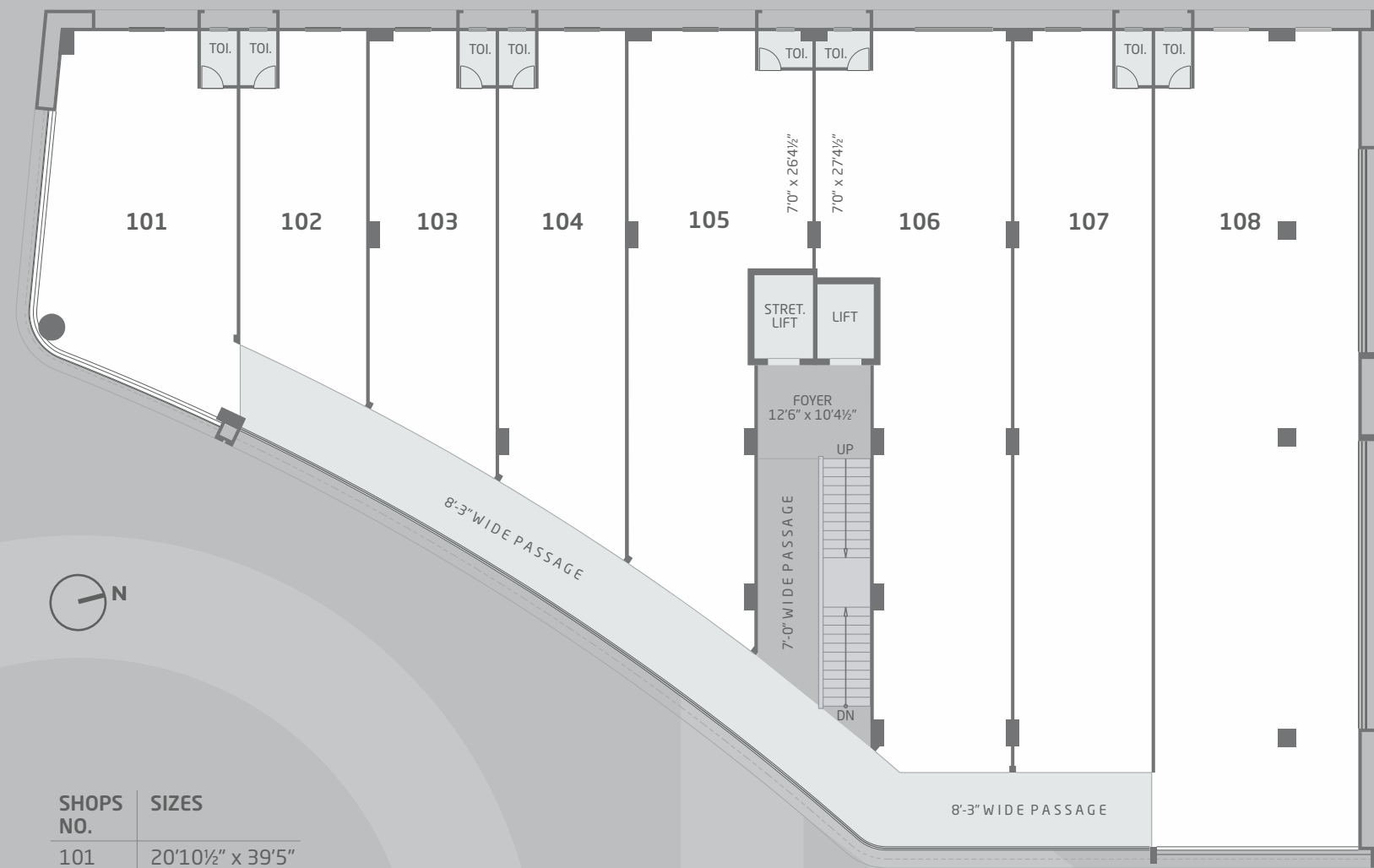
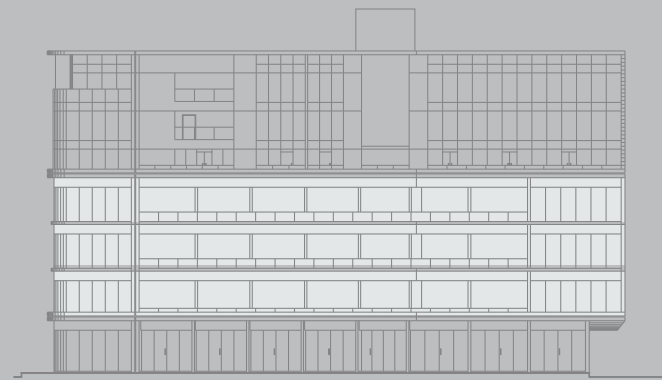


60.00 MT. RING ROAD

TOWARDS SCIENCE CITY →

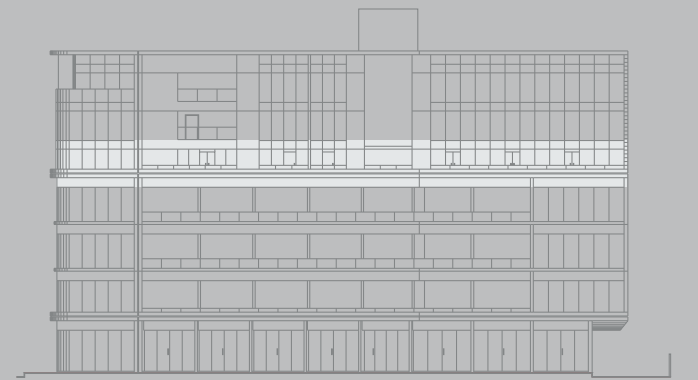
VA ENTRY / EXIT

1ST TO 3RD FLOOR PLAN



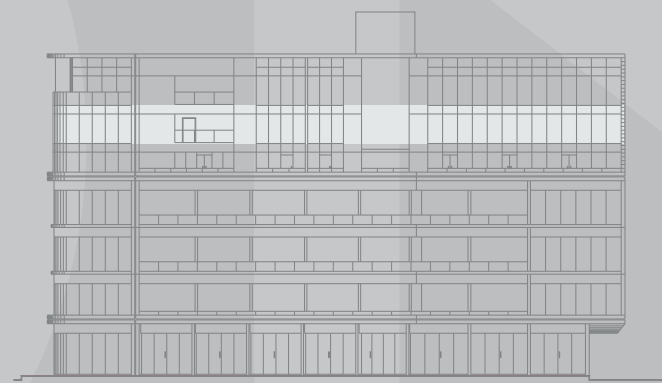
SHOPS NO.	SIZES
101	20'10½" x 39'5"
102	14'0" x 38'2"
103	14'0" x 45'9"
104	14'0" x 54'4"
105	14'0" x 64'1"
106	15'3" x 82'4½"
107	15'3" x 82'4½"
108	22'7½" x 90'7½"

4TH FLOOR PLAN



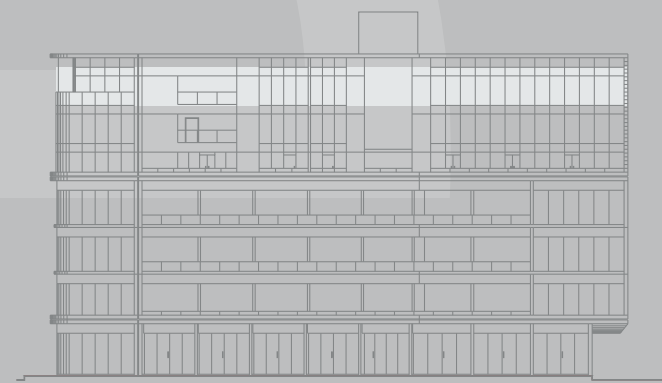
OFFICES NO.	SIZES	OFFICES NO.	SIZES
401	14'0" x 23'9"	408	21'8½" x 36'9"
402	14'0" x 15'0"	409	15'3" x 36'9"
403	20'10½" x 39'0"	410	22'7½" x 40'5"
404	14'0" x 36'9"	411	22'7½" x 41'2½"
405	14'0" x 36'9"	412	15'3" x 37'6"
406	14'0" x 36'9"	413	15'3" x 37'6"
407	20'5½" x 36'9"		

5TH FLOOR PLAN



OFFICES NO.	SIZES	OFFICES NO.	SIZES
501	14'0" x 23'9"	508	21'8 1/2" x 36'9"
502	14'0" x 15'0"	509	15'3" x 36'9"
503	20'10 1/2" x 39'0"	510	22'7 1/2" x 40'5"
504	14'0" x 36'9"	511	22'7 1/2" x 41'2 1/2"
505	14'0" x 36'9"	512	15'3" x 37'6"
506	14'0" x 36'9"	513	15'3" x 37'6"
507	20'5 1/2" x 36'9"		

6TH FLOOR PLAN



OFFICES NO.	SIZES	OFFICES NO.	SIZES
601	14'0"X23'9"	607	21'8 1/2"X36'9"
602	14'0"X15'0"	608	15'3"X36'9"
603	31'6"X39'0"	609	22'7 1/2"X40'5"
604	14'0"X36'9"	610	22'7 1/2"X41'2 1/2"
605	14'0"X36'9"	611	15'3"X37'6"
606	20'5 1/2"X36'9"	612	15'3"X37'6"

AN UNPRECEDENTED
LOCATION

SHILP
ONE

